



# dig-it

Dyslexia information group in Tamworth

Our year

2012 to 2013



# About Dig-iT

## **Community volunteer support group:**

- ❑ We offer regular support drop-ins for dyslexic people of all ages and their families, for mutual support, information, advice and activities.
- ❑ We aim to raise awareness of dyslexia, its characteristics, co-occurrences and its wide ranging impact on society.
- ❑ We collaborate with other voluntary and statutory bodies.
- ❑ Promote practical solutions for people that are affected by dyslexia.
- ❑ Volunteers and committee members include dyslexic adults.
- ❑ We want to develop from the 'bottom up' to meet local need.

# How we began

- ❑ Three parents with children at school got together.
- ❑ One-off 'drop-in' held in Philip Dix Centre in Sept 2011.
- ❑ 25 families attended - a group was needed.
- ❑ Monthly drop-ins started at Carnegie Centre in Jan 2012
- ❑ Dig-iT became a constituted group in April 2012.
- ❑ Additional drop-ins with Community Cafe at Kerria Centre from Autumn 2012.



# Families supported

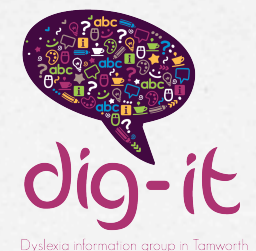
- ❑ 81 families have made contact since January 2012
- ❑ 39 families requested specific information & support
- ❑ Carnegie Centre: 61.5%
- ❑ Amington Community Cafe: 7.7%
- ❑ Outreach (events): 30.8%





# Reasons for contact

- ❑ Adult = 10 contacts (25.6%)
- ❑ Child = 26 contacts (66.7%)
- ❑ Self & child = 3 contacts (7.7%)
- ❑ Education = 31 contacts (79%)
  - ❑ Primary school 84%
  - ❑ Secondary school 10%
  - ❑ College / university (20%)
- ❑ General = 10 contacts (26%)





# Common enquiries

- ❑ Dyslexia traits = 49%
- ❑ Help at school = 41%
- ❑ Screening assessments = 33.3%
- ❑ Diagnostic assessments = 31%
- ❑ School Action / SA+ = 20.5%
- ❑ Literacy help & tips = 20.5%
- ❑ Equality Act 2010 = 8%





# Finances

## 1. Income

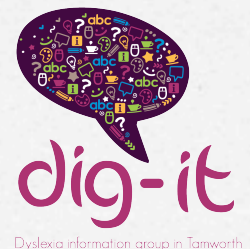
Sources of Income	Amount
Donations	£542.50
Grants	£1000.00
Fundraising	£133.61
<b>TOTAL</b>	<b>£1676.11</b>

## 2. Expenditure

Category	Amount
Venue Hire	£523.00
Computer software	£246.41
Insurance	£137.34
Drop-in resources	341.38
Courses	£75.00
<b>TOTAL</b>	<b>£1323.13</b>

## 3. Surplus

**£352.98**





# Awareness-raising & promotion

## Tamworth Library

- ❑ Adult Learners Week: 12-18th May 2012
- ❑ Health Info Week: 7th July 2012





## Castle Grounds (Tamworth Lions)

- ❑ Torch Event: 30th June 2012
- ❑ Tamworth Heritage Day: 2nd September 2012





## Positively Different - Town Hall, 12th-13th October 2012

The poster is for an event called 'Positively Different' organized by 'dig-it' (Dyslexia information group in Tamworth). It features a purple background with a blue diagonal stripe. At the top left is a logo for 'dig-it' with a brain icon made of letters and numbers. To the right of the logo is the phone number '0753 451 3338' and the website 'dig-itam.weebly.com'. The main title 'POSITIVELY DIFFERENT' is in large, white, bold letters with green arrows pointing up and down through the 'I' in 'POSITIVE' and the 'I' in 'DIFFERENT'. Below the title, on the left, is a blue rectangular area containing two images: a photograph of a building with a red and yellow facade, and a painting of a construction site with cranes. Below these images is the text 'Photography & painting by Robert Barlow' and 'Reproduced by kind permission ©'. On the right side of the poster, there is a quote in white text: 'A celebration of achievements of dyslexic people of all ages living in Tamworth', flanked by blue double quotation marks. At the bottom right, on a green background, is the event location 'Tamworth's old Town Hall, Market Street, Tamworth', the date and time 'Saturday 13th October 2012, 9.30am to 4pm', and the admission 'Admission FREE'.

0753 451 3338 dig-itam.weebly.com

dig-it  
Dyslexia information group in Tamworth

POSITIVELY DIFFERENT

“ A celebration of achievements of dyslexic people of all ages living in Tamworth ”

Tamworth's old Town Hall  
Market Street,  
Tamworth

Saturday 13th October 2012  
9.30am to 4pm

Admission FREE

Photography & painting  
by Robert Barlow

Reproduced by kind permission ©



# Comfort Break



**Please be back  
in 5 minutes!**



# Networking & collaboration


- ❑ Tamworth Dyspraxia Group
- ❑ Staffordshire Umbrella Network (SUN)
- ❑ Tamworth Library
- ❑ Tamworth Community Cafe
- ❑ Tamworth Amateur Boxing Club
- ❑ Tamworth School Support Network
- ❑ Staffordshire SkillShare
- ❑ Tamworth Borough Council (ARCH projects / Children & Communities)
- ❑ Tamworth Youth Service & SCYVS





# Memorable events

## Staffordshire SkillShare Dyslexia and Dyspraxia workshops, Snow Dome (22nd September 2012)



**Dealing with Dyslexia and Dyspraxia – A practical workshop day**

**Are you the PARENT or CARER of a child with dyslexia/dyslexic tendencies and/or dyspraxia/dyspraxic tendencies in Staffordshire?**

SkillShare, a project funded through the BIG Lottery Fund and managed by Staffordshire Parent Partnership Service, brings you a workshop for parents and carers of children with dyslexia/dyspraxia.

**Choices of workshop sessions will include:**

- What is dyslexia/dyspraxia
- Strategies for supporting dyslexic/dyspraxic children's learning
- Resources to support children
- Using computer technology
- Improving self esteem


This **FREE** workshop will be held at **The SnowDome, Tamworth, B79 7ND** on **Saturday 22nd September 2012** between **9.30am – 4.00pm**, including lunch. Places are limited and **MUST** be booked in advance with workshop choices.


Parents and carers may be able to claim travel and/or childcare expenses.

For further information and to book places, please contact Parent Partnership Service on **01785 356930** or **skillshare@staffordshire.gov.uk**

Booking forms are available on our website **staffordshire.gov.uk/spps**

If you have any special access requirements, or if you, or anyone you know, would like a copy of this flyer in large print, Braille, on audio-tape or in languages other than English, please contact Parent Partnership Service on 01785 356921.

 **SkillShare**  
providing training for parents and carers

Supported by  **The National Lottery**  
through the Big Lottery Fund

Print and design by Staffordshire County Council, Print Commissioning Services. Telephone: 01785 270051 65620/12



## Positively Different Exhibition (12th & 13th October 2012)





## Corner Post Gym official opening (19th October 2012)



Julie meets Olympic gold medal boxing champ Luke Campbell (who is dyslexic)



# Policy & participation

**Dig-iT took part in the following public consultations:**

- ❑ **Children and Families Bill:** “Support and aspiration: A new approach to special educational needs and disability”.
- ❑ **Reforming Key Stage 4 Qualifications** (GCSEs)





# Future plans

- ☐ Dyslexia screening service
- ☐ Positively Different 2013
- ☐ Expand presence at Community Cafes
- ☐ Youth Consultation
- ☐ Adult drop-in
- ☐ Activities for children
- ☐ Volunteer development
- ☐ SEN training



# Acknowledgments

## **Aldergate Pre-school Play Group**

**Mark Aston**, Amington ARCH

**Lee Bates**, Tamworth Community Cafe

**Mayor, Cllr Tina Clements**, Tamworth Borough Council

**Yasser Din**, Stonydelph ARCH

**John Faulkner**, Chartered Accountant

**Christine Howlett**, Specialist Teacher

**Maggie Huckfield**, Tamworth Youth Service

**Laura Hastilow & Hannah McKenzie**, Tamworth Assembly Rooms

**Stephanie Ivey**, Tamworth Borough Council

**Debra Lewis**, and the team at Tamworth Information Centre

**Lizzie Morgan**, Graphic Designer

**Wil Summers**, Tamworth CVS

**Nicky Sutherland**, Corner Post Gym

**Tamworth Lions**

## **Dig-iT Volunteers**

Matt McDermid

Rob Morgan

Charmaine Gambrell

Jean Hill

Peter Hill

Laura Hill

Hannah Smart



**Thank you**



**dig-it**

Dyslexia information group in Tamworth